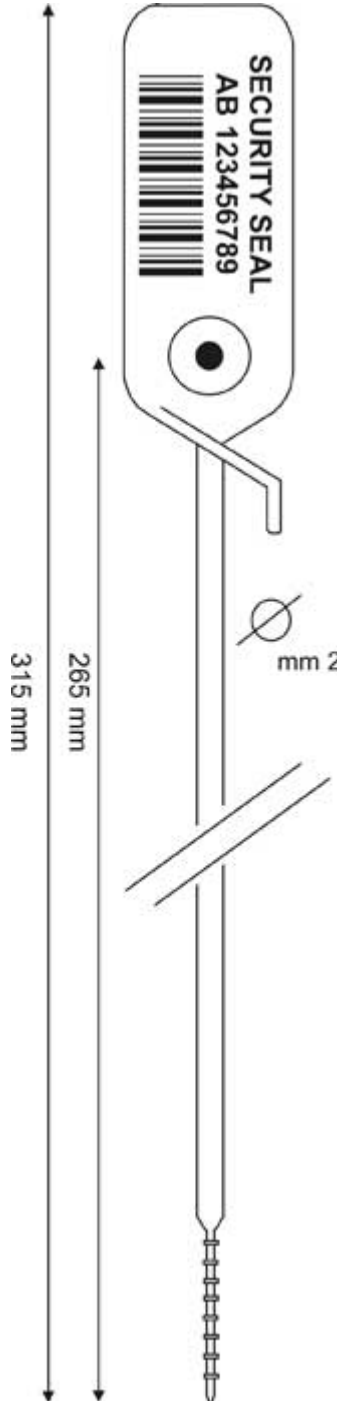


Scellés de Sécurité : JUPI



JUPI 2x315 mm JUPI 2x315 mm



DESCRIPTION:

- Adjustable security seals, pull up action for quick application and immediate security.
- Metal lock mechanism
- Tear-off possibility or standard version.

SIZES:

- Diam: 2 mm
- Length: 315 mm
- Label: 22x50 mm

SEQUENTIAL NUMBERING AND CUSTOMISATION:

- INK TRANSFER PRINT
- Sequenced numbering up to 15 digits.
- Bar-code possibility
- Customised up to 20 characters on one line
- Logos available upon request
- For special orders, logo printing in relief.

MATERIAL:

- In accordance with: **Restriction of Hazardous Substances (RoHS)** listed in the European Directive 2002/EC.

OTHER PRODUCT SIZES WITH THE SAME CHARACTERISTICS

- **JUPI**: 1,3x225 mm | Label: 22x50 mm
- **JUPI**: 2x425 mm | Label: 22x50 mm
- **JUPITER**: 3,3x315 mm | Label: 22x50 mm
- **JUPI** : 3,3x425 mm | Label: 22x50 mm

- **JUPI L.L.**: 3,8x420 mm | Label: 50x68 mm

AVAILABLE COLOURS

PACKING:

Carton with 1.000 seals- strip of 10 pcs
Carton dimensions: 56x34x20 cm
Carton weight: 3 kgs

